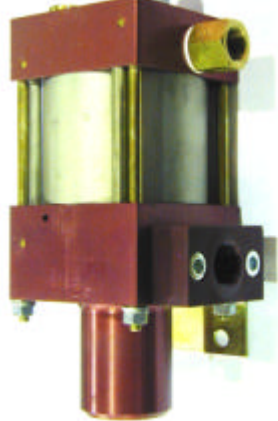


Technical Sheet Release: 6/2000	MO12	Oil service
 <p style="text-align: center;">MO12 Single acting, single air drive head (Standard = Bottom inlet)</p>	Technical Data:	
	Air Drive Pressure:	1–10 bar/14,5–145 psi
	Calculated Outlet Pressure at an air drive of 10 bar / 145 psi	140 bar/ 2,031 psi
	Pressure ratio:	1 : 14
	Displacement Volume/Double Stroke:	9.4 cm ³ / 0.57 cu.inch
	Connections:	
	Inlet:	Standard: Bottom inlet 3/4 BSP
	Outlet:	1/2 BSP
	Air Drive:	3/8 BSP
	Maximum Operating Temperature:	60°C
	Net weight:	2.5 kg
	<i>Pressure and flow performances, please see enclosed graph.</i>	
	Material of construction:	
	Top cap:	Aluminium
Air cylinder:	Aluminium	
Seal Package:	Polyurethane, Buna N	
Pump Body:	AlCuMgPbF34 „anodized“	
Piston:	1.4112 (hardened)	
Approximate Dimensions:		
Height:	190 mm	
Depth:	102 mm	
Width:	80 mm	
Special inlet and outlet ports, i.e. NPT	MO12-NPT	
Special seal material to handle special fluids on request.		
Available Accessories:		
Air control units for M series with filter pressure regulator, control pressure gauge and shut-off valve:	MO12 with C1	
To protect the pump against excessive outlet pressures or to limit the outlet pressure, a safety valve can be fitted to the air control unit in the air drive line:	MO12 with C1/SVair (The required outlet pressure has to be indicated.)	

Please consult factory for more information.

All technical and dimensional information subject to change. All General Terms and Conditions of sale, including limitations of our liability, apply to all products and services sold.

MAXIMATOR®

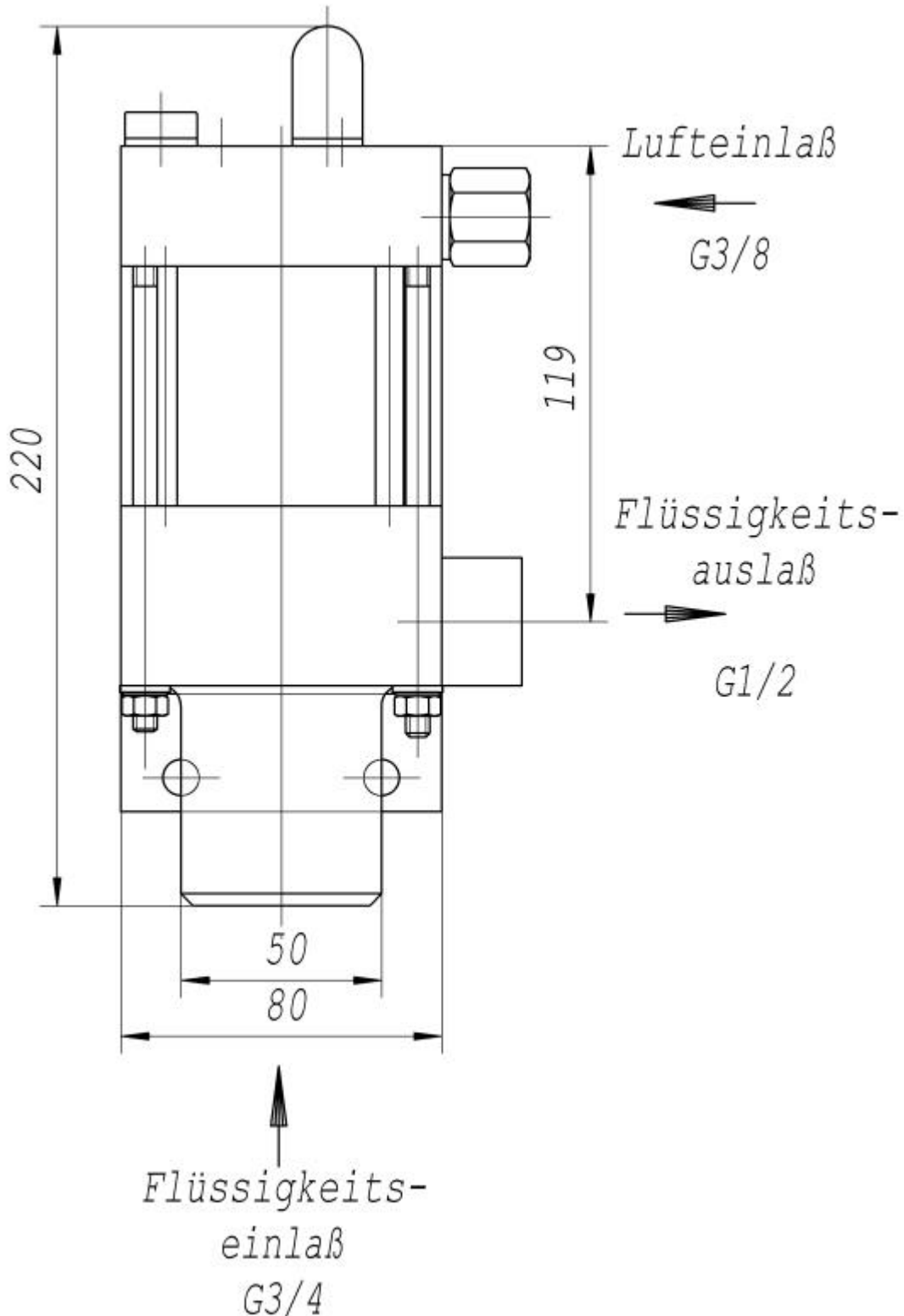
Dimension Drawing MO12

Lufteinlaß = Air Drive Inlet

Flüssigkeitseinlaß = Liquid Inlet

Flüssigkeitsauslaß = Liquid Outlet

Standard pump comes with BSP ports and bottom inlet.



MAXIMATOR GmbH

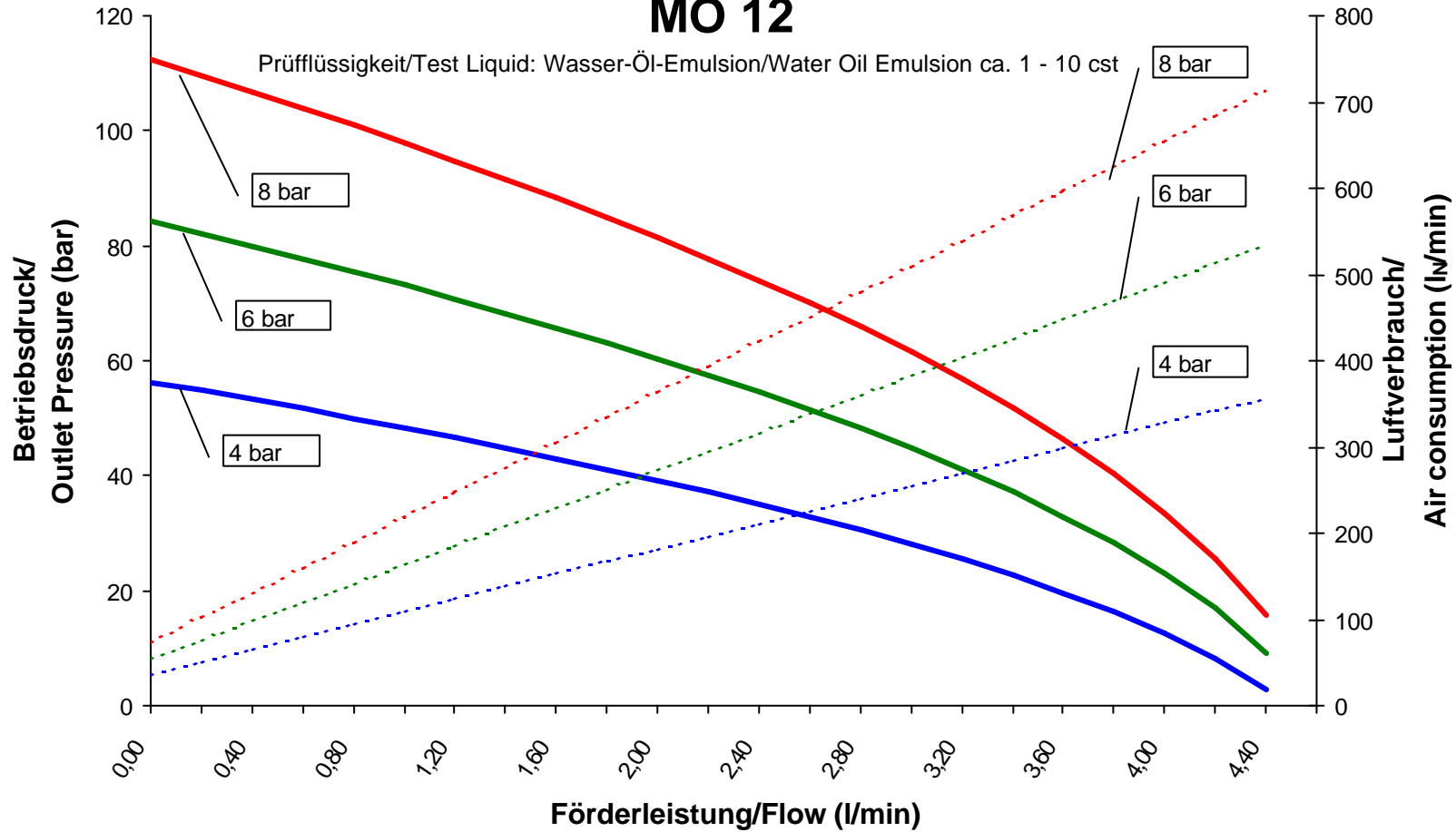
37449 Zorge/Germany, Walkenrieder Str. 15, Tel.: ++49 (0) 5586 803 0, Fax: ++49 (0) 5586 803 40

e-mail: info@maximator.de, website: www.maximator.de

Leistungsdiagramm/Performance Graph

MO 12

Prüfflüssigkeit/Test Liquid: Wasser-Öl-Emulsion/Water Oil Emulsion ca. 1 - 10 cst



- Betriebsdruck bei/Outlet Pressure at 4 bar
- Betriebsdruck bei/Outlet Pressure at 6 bar
- Betriebsdruck bei/Outlet Pressure at 8 bar
- ... Luftverbrauch bei/Air consumption at 4 bar
- ... Luftverbrauch bei/Air consumption at 6 bar
- ... Luftverbrauch bei/Air consumption at 8 bar