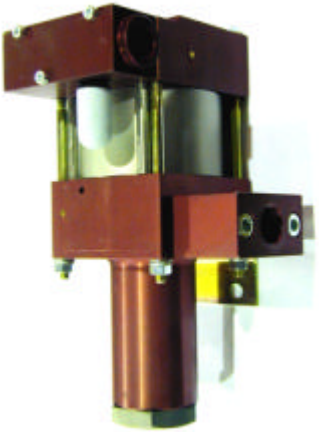


# MAXIMATOR®

<b>Technical Sheet</b> Release: 7/2000	<b>M4(L)</b>	Oil service					
	<b>M4(L)VE</b>	Water service					
 <p style="text-align: center;"><b>M4(L)</b>  <b>Single acting, single air drive head</b>          (Standard = Bottom inlet)</p>	<b>Technical Data:</b>						
	Air Drive Pressure:	1–10 bar/14,5–145 psi					
	Calculated Outlet Pressure at an air drive of 10 bar / 145 psi	40 bar/ 580 psi					
	Pressure ratio:	1 : 4					
	Displacement Volume/Double Stroke:	30.5 cm <sup>3</sup> / 1.86 cu.inch					
	<b>Connections:</b>						
	Inlet:	Standard: Bottom inlet 1 BSP					
	Outlet:	1/2 BSP					
	Air Drive:	3/8 BSP					
	Maximum Operating Temperature:	60°C					
	Net Weight:	3.0 kg					
	<i>Pressure and flow performances, please see enclosed graph.</i>						
	<b>Wetted materials of construction:</b>	Seal Package:	<table border="1"> <tr> <td>M4(L):</td> <td>Polyurethane, Buna N</td> </tr> <tr> <td>M4(L)VE</td> <td>UHMWPE, Viton</td> </tr> </table>	M4(L):	Polyurethane, Buna N	M4(L)VE	UHMWPE, Viton
	M4(L):	Polyurethane, Buna N					
M4(L)VE	UHMWPE, Viton						
	Pump Body:	AlMgSiPB anodized					
	Piston:	1.4112 (hardened)					
	Fittings:	Inlet: 1.4305 Outlet: AlMgPbCu anodized					
<b>Approximate Dimensions:</b>							
	Height:	216 mm					
	Depth:	120 mm					
	Width:	112 mm					
<b>Available Options:</b>							
	Seal material for oil service (standard):	M4(L)					
	Seal material for water service:	M4(L)VE					
	Special inlet and outlet ports, i.e. NPT	M4(L)-NPT M4(L)VE-NPT					
	Special seal material to handle special fluids on request.						
<b>Available Accessories:</b>							
Air control units for M series with filter pressure regulator, control pressure gauge and shut-off valve:	M4(L) with C1						
To protect the pump against excessive outlet pressures or to limit the outlet pressure, a safety valve can be fitted to the air control unit in the air drive line:	M4(L) with C1/SVair (The required outlet pressure has to be indicated.)						

**Please consult factory for more information.**

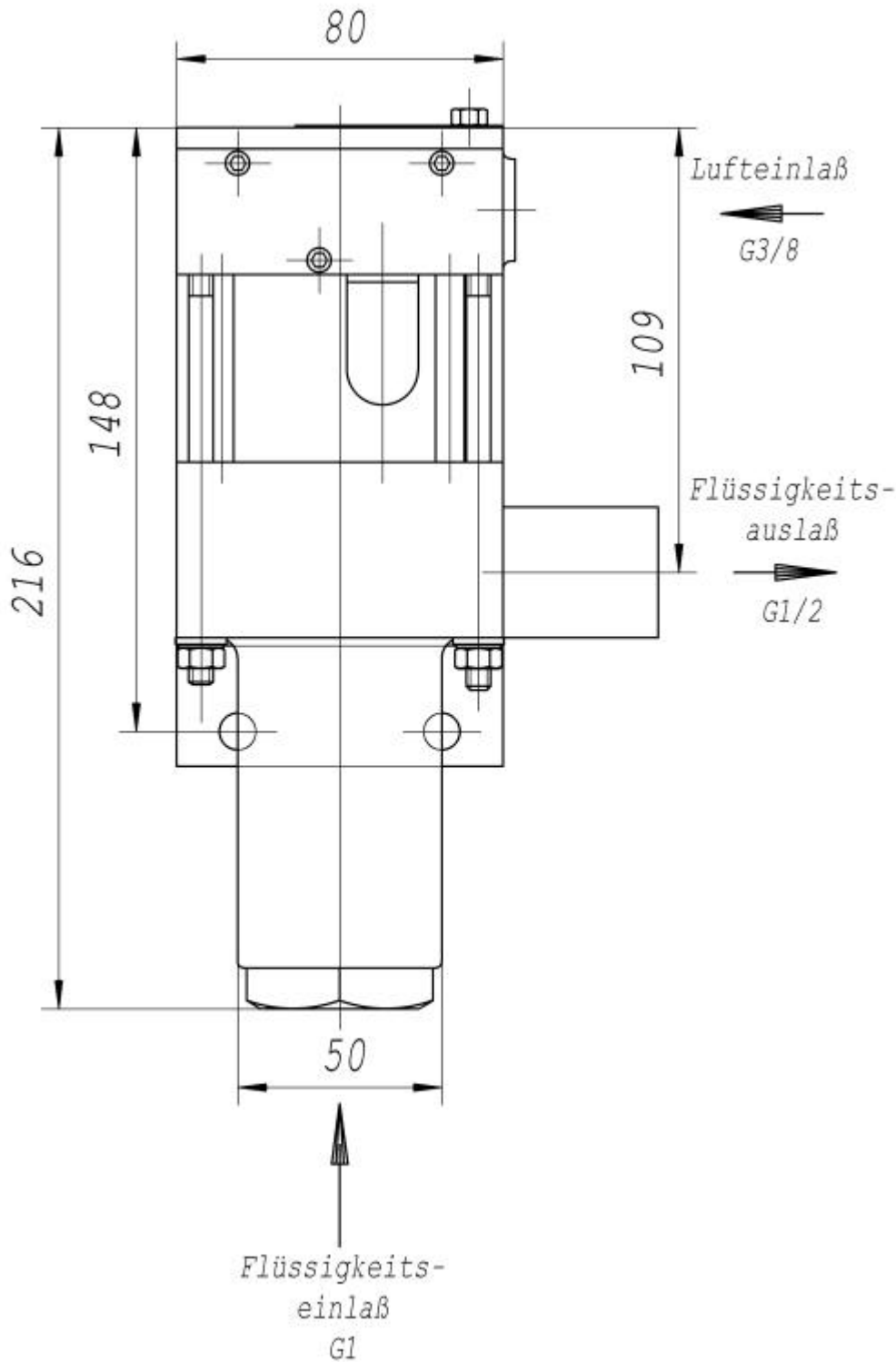
*All technical and dimensional information subject to change. All General Terms and Conditions of sale, including limitations of our liability, apply to all products and services sold.*

**MAXIMATOR GmbH**  
 37449 Zorge/Germany, Walkenrieder Str. 15, Tel.: ++49 (0) 5586 803 0, Fax: ++49 (0) 5586 803 40  
 e-mail: [info@maximator.de](mailto:info@maximator.de), website: [www.maximator.de](http://www.maximator.de)

# MAXIMATOR®

## Dimension Drawing M4

Lufteinlaß = Air Drive Inlet  
Flüssigkeitseinlaß = Liquid Inlet  
Flüssigkeitsauslaß = Liquid Outlet  
Standard pump comes with BSP ports and bottom inlet.



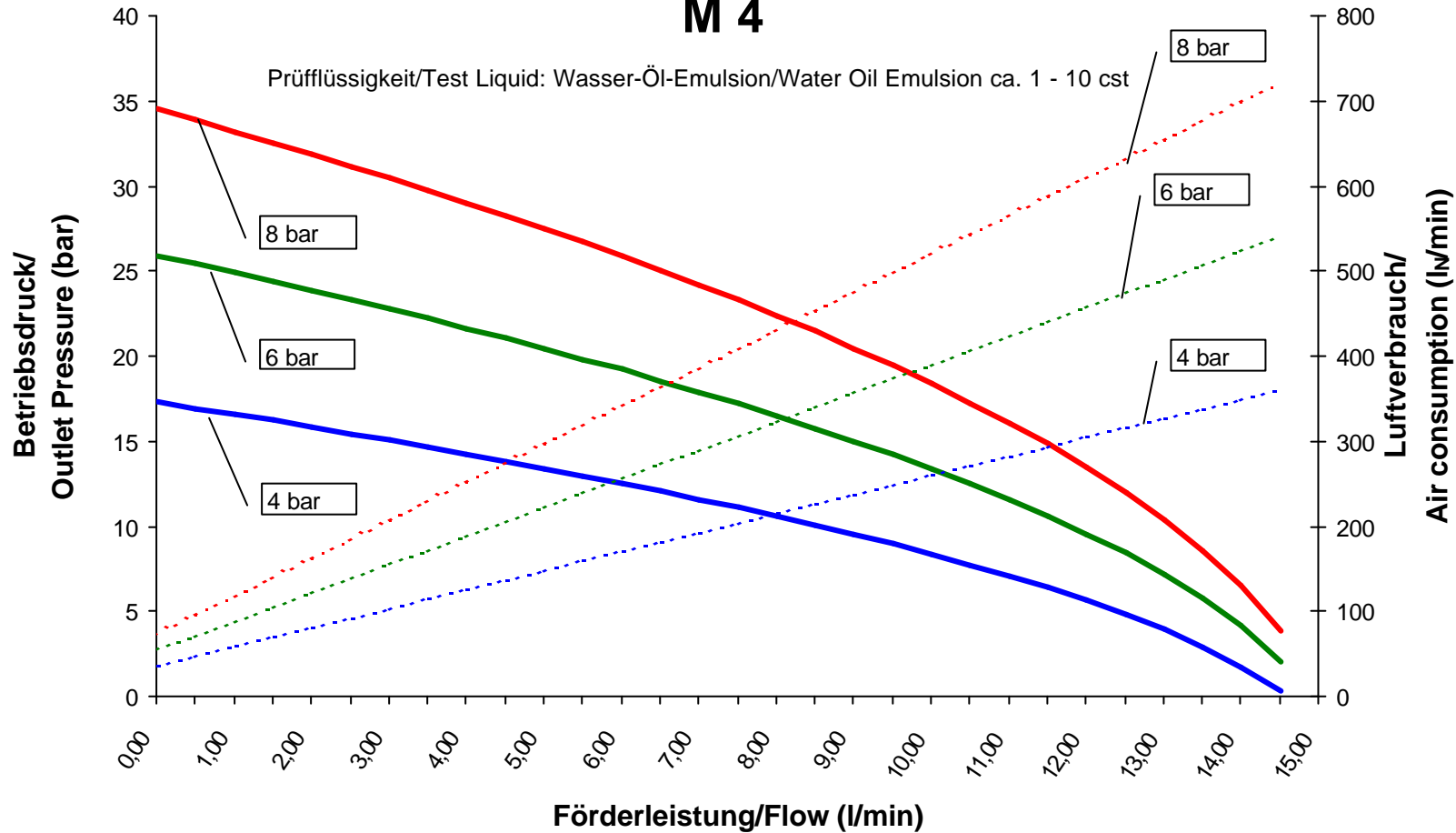
MAXIMATOR GmbH

37449 Zorge/Germany, Walkenrieder Str. 15, Tel.: ++49 (0) 5586 803 0, Fax: ++49 (0) 5586 803 40

e-mail: [info@maximator.de](mailto:info@maximator.de), website: [www.maximator.de](http://www.maximator.de)

## Leistungsdiagramm/Performance Graph

### M 4



- Betriebsdruck bei/Outlet Pressure at 4 bar
- Betriebsdruck bei/Outlet Pressure at 6 bar
- Betriebsdruck bei/Outlet Pressure at 8 bar
- ... Luftverbrauch bei/Air consumption at 4 bar
- ... Luftverbrauch bei/Air consumption at 6 bar
- ... Luftverbrauch bei/Air consumption at 8 bar