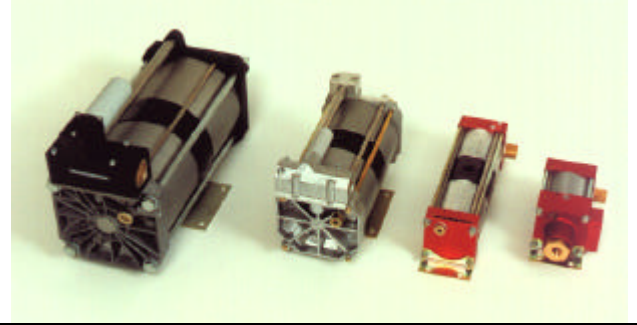



MAXIMATOR®

Technical sheet: Release: 8/2002	Air Amplifier	GPLV2 Order Code: 3220.0327	
PLV series: GPLV2 – SPLV2 – MPLV2 – MPLV4 (Pressure ratio: 1:2 resp. 1:4)			
Short description MAXIMATOR PLV series are suitable for the compression of shop air. Due to their drive concept they can increase the pressure of an existing shop air line in ratios 1:2 resp. 1:4. Only shop air is needed to operate them.			
Benefits <ul style="list-style-type: none">- Direct pressure increase for a single application- No energy consumption by the air amplifier when the outlet pressure is reached- Non electrical installation, so application in ex areas possible			
Technical data			
Inlet pressure:	1 to 10 bar	Connections:	
Outlet pressure:	2 to maximum 20 bar	Inlet:	1/2" BSP
Pressure ratio	1 : 2	Outlet:	1/2" BSP
Medium:	Compressed air, nitrogen	Air drive:	3/4" BSP
Maximum operating temperature:	60°C		
Weight:	20.5 kg		
Wetted material of construction:	All wetted parts are of light metal resp. stainless steel. Dynamic seals are of special wear resisting PTFE (Teflon).		
Accessories:	Air control unit "C2", comprising of combined filter pressure regulator, control pressure gauge and shut-off valve.		
Option:	Air drive port:	1/2 BSP	
Packaged Amplifier Systems:			
GPLV2 / 40 liter / 16 bar (photo shows a similar model)		Comprising: <ul style="list-style-type: none">- Air amplifier GPLV2- Filter regulator with shut-off valve- Receiver 40 Liter, 16 bar- Safety valve 16 bar- Outlet pressure gauge 0-16 bar, dia. 50 mm The system comes completely mounted, pressure tested and ready for connection. Bestellcode.: 3230.0349/AP201.104.00	
		Other available stations: <ul style="list-style-type: none">- GPLV2/40 Liter/20 bar: Order code: 3230.0394/AP201.104.01- GPLV2/3 Liter/16 bar Order code: 3230.0422/AP201.119.00	

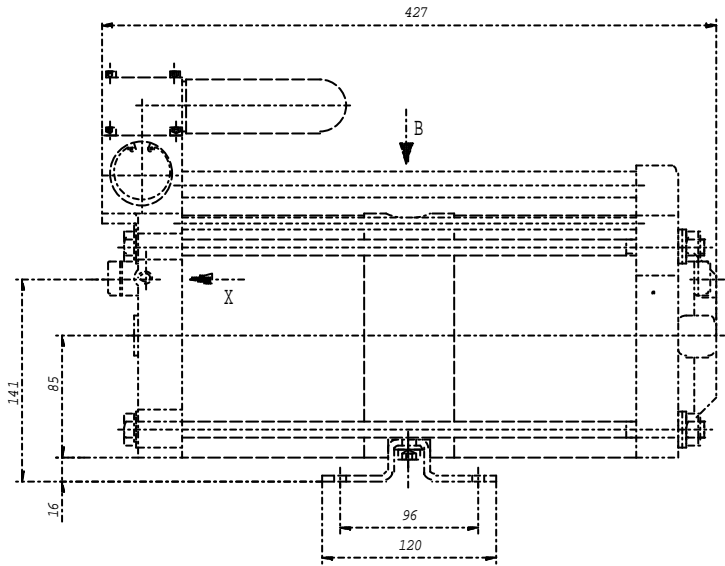
Please consult factory for more information.

All technical and dimensional information subject to change. All General Terms and Conditions of sale, including limitations of our liability, apply to all products and services sold.

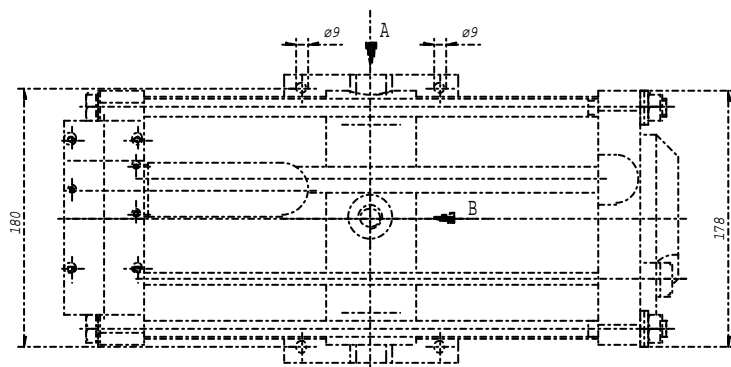
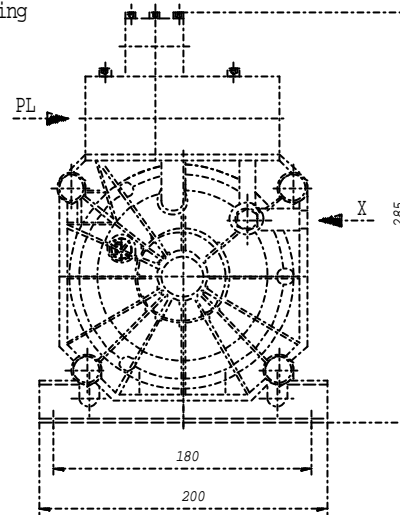
MAXIMATOR^o GmbH

37449 Zorge/Germany, Walkenrieder Str. 15, Tel.: ++49 (0) 5586 803 0, Fax: ++49 (0) 5586 803 40

e-mail: info@maximator.de, website: www.maximator.de



MAXIMATOR
 Maßzeichnung / Dimension drawing
 Typ / type: GPLV 2

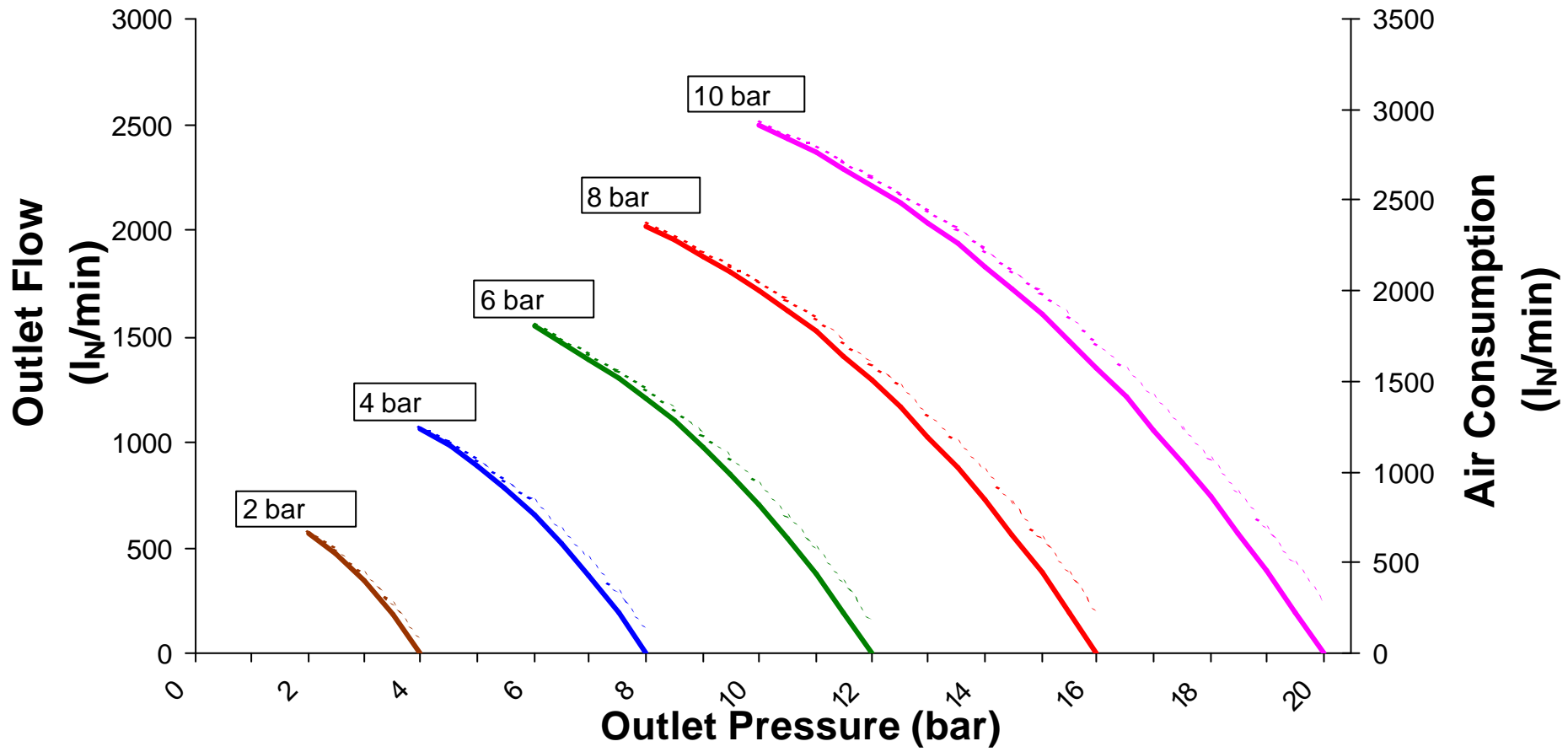


- Antriebslufteinlaß....P_L = G3/4 (3/4BSP)
(air drive inlet)
- Einlaß.....A = G1/2 (1/2BSP)
(suction port)
- Auslaß.....B = G1/2 (1/2BSP)
(discharge port)
- Steuerluftanschluß.....X = G1/8 (1/8BSP)
(external pilot con.)

MAXIMATOR	
Schmid: Kraus & Co GmbH	
D-71434 Sershausen	
Tel. +49 (0) 7141 909-0	
Fax +49 (0) 7141 909-100	
E-Mail: info@maximator.de	
www.maximator.de	
MAXIMATOR	Druckluftventil
Typ: GPLV 2	1222
11.05.73	

Performance Graph GPLV 2

For air demand add together outlet flow and air consumption



- Outlet Flow at 2 bar
- Outlet Flow at 4 bar
- Outlet Flow at 6 bar
- Outlet Flow at 8 bar
- Outlet Flow at 10 bar
- Air Consumption at 2 bar
- Air Consumption at 4 bar
- Air Consumption at 6 bar
- Air Consumption at 8 bar
- Air Consumption at 10 bar