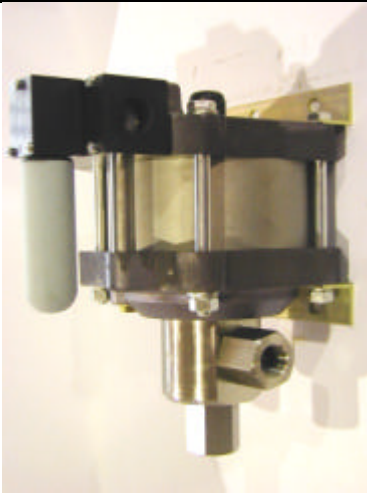


# MAXIMATOR®

<b>Technical Sheet</b> Release: 11/2000	<b>G60(L)</b>	Oil service	
	<b>G60(L)VE</b>	Water service	
 <p style="text-align: center;"><b>G60(L)</b>  <b>Single acting, single air drive head</b>          (Standard = Bottom inlet)</p>	<b>Technical Data:</b>		
	Air Drive Pressure:	1–10 bar/14,5–145 psi	
	Calculated Outlet Pressure at an air drive of 10 bar / 145 psi	630 bar/ 9,135 psi	
	Pressure ratio:	1 : 63	
	Displacement Volume/Double Stroke:	15.4 cm <sup>3</sup> / 0.94 cu.inch	
	<b>Connections:</b>		
	Inlet:	Standard: Bottom inlet 3/4 BSP	
	Outlet:	½ BSP	
	Air Drive:	¾ BSP	
	Maximum Operating Temperature:	60°C	
	Net weight:	13.5 kg	
	<i>Pressure and flow performances, please see enclosed graph.</i>		
	<b>Wetted materials of construction:</b>		
	Seal Package:	G60(L):	Polyurethane, Buna N
		G60(L)VE	UHMWPE, Viton
Pump Body:	1.4305		
Piston:	1.4112 (hardened)		
Fittings:	1.4571		
<b>Approximate Dimensions:</b>			
Height:	321 mm		
Depth:	184.5 mm		
Width:	272 mm		
<b>Available Options:</b>			
Seal material for oil service (standard):	G60(L)		
Seal material for water service:	G60(L)VE		
Side inlet:	G60(L) <b>S</b> / G60(L)VE <b>S</b>		
Special inlet and outlet ports, i.e. NPT	G60(L)- <b>NPT</b> G60(L)VE- <b>NPT</b>		
Special seal material to handle special fluids on request.			
<b>Available Accessories:</b>			
Air control units for G series with filter pressure regulator, control pressure gauge and shut-off valve:	G60(L) <b>with C2</b>		
To protect the pump against excessive outlet pressures or to limit the outlet pressure, a safety valve can be fitted to the air control unit in the air drive line:	G60(L) <b>with C2/SVair</b> (The required outlet pressure has to be indicated.)		

**Please consult factory for more information.**

*All technical and dimensional information subject to change. All General Terms and Conditions of sale, including limitations of our liability, apply to all products and services sold.*

MAXIMATOR GmbH

37449 Zorge/Germany, Walkenrieder Str. 15, Tel.: ++49 (0) 5586 803 0, Fax: ++49 (0) 5586 803 40

e-mail: [info@maximator.de](mailto:info@maximator.de), website: [www.maximator.de](http://www.maximator.de)

# MAXIMATOR®

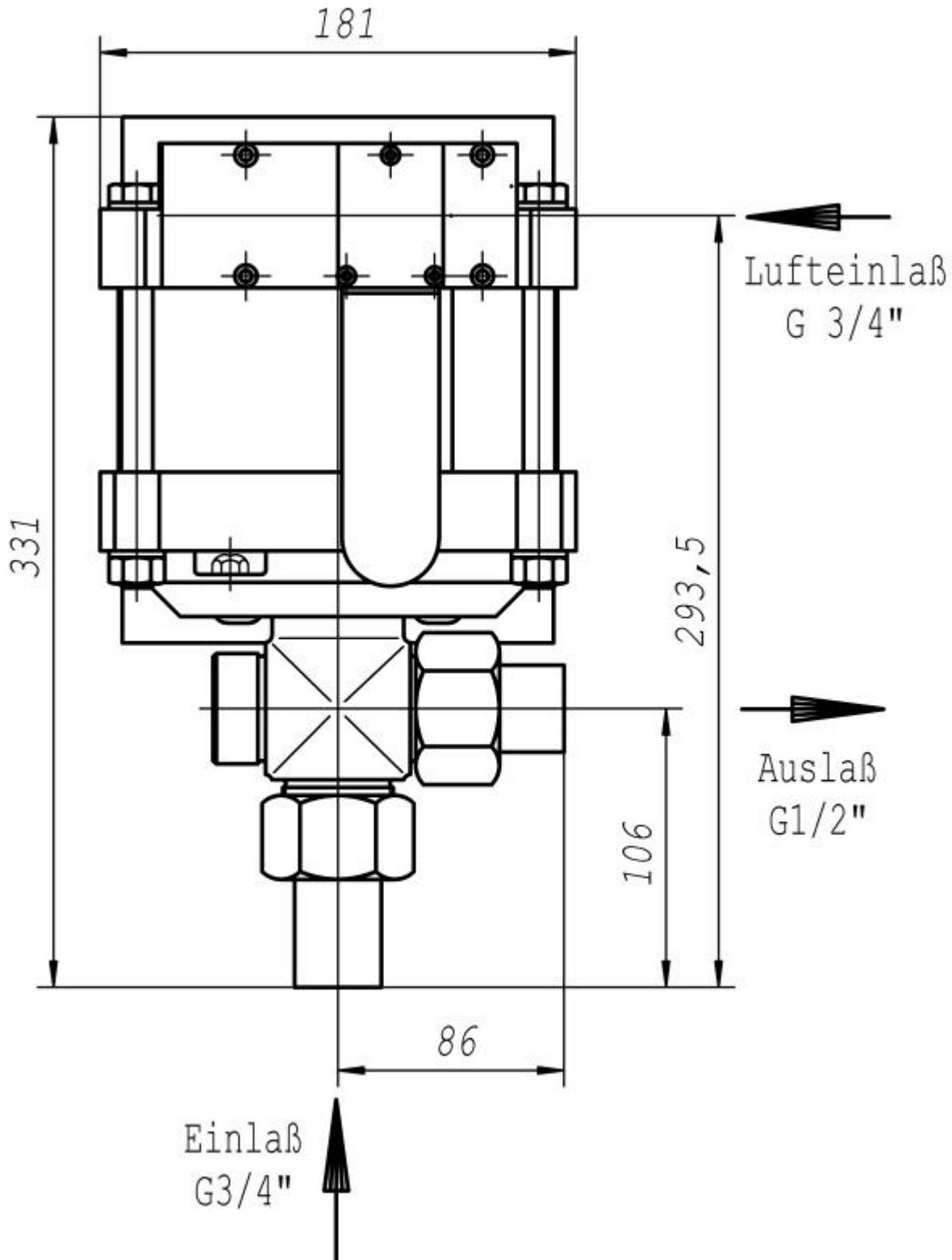
## Dimension Drawing G60

Lufteinlaß = Air Drive Inlet

Einlaß = Liquid Inlet

Auslaß = Liquid Outlet

Standard pump comes with BSP ports and bottom inlet.



MAXIMATOR GmbH

37449 Zorge/Germany, Walkenrieder Str. 15, Tel.: ++49 (0) 5586 803 0, Fax: ++49 (0) 5586 803 40

e-mail: [info@maximator.de](mailto:info@maximator.de), website: [www.maximator.de](http://www.maximator.de)

