

MAXIMATOR®

Technical Sheet Release: 11/2000	G500(L)S	Oil and water service
 <p style="text-align: center;">G500(L)S Single acting, single air drive head, side inlet (Bottom inlet not available)</p>	Technical Data:	
	Air Drive Pressure:	1–10 bar/14,5–145 psi
	Maximum Permitted Outlet Pressure:	4,500 bar/ 65,250 psi
	Pressure ratio:	1 : 519
	Displacement Volume/Double Stroke:	1.9 cm ³ / 0.12 cu.inch
	Connections:	
	Inlet: Only side inlet available	1/4 BSP
	Outlet:	9/16-18UNF
	Air Drive:	¾ BSP
	Maximum Operating Temperature:	60°C
Net weight:	13.5 kg	
<i>Pressure and flow performances, please see enclosed graph.</i>		
Wetted materials of construction:	Seal Package:	G500(L)S: Polyurethane, Buna N
	Pump Body:	1.4313
	Piston:	Hard metal, bracket: 1.4112
	Fittings:	17-4-PH
Approximate Dimensions:		
	Height:	362mm
	Depth:	181 mm
	Width:	272 mm
	Special inlet ports, i.e. NPT	G500(L) with NPT inlet
	Special seal material to handle special fluids on request.	
Available Accessories:		
Air control units for G series with filter pressure regulator, control pressure gauge and shut-off valve:	G500(L) with C2	
To protect the pump against excessive outlet pressures or to limit the outlet pressure, a safety valve can be fitted to the air control unit in the air drive line:	G500(L) with C2/SVair (The required outlet pressure has to be indicated.)	

Please consult factory for more information.

All technical and dimensional information subject to change. All General Terms and Conditions of sale, including limitations of our liability, apply to all products and services sold.

MAXIMATOR®

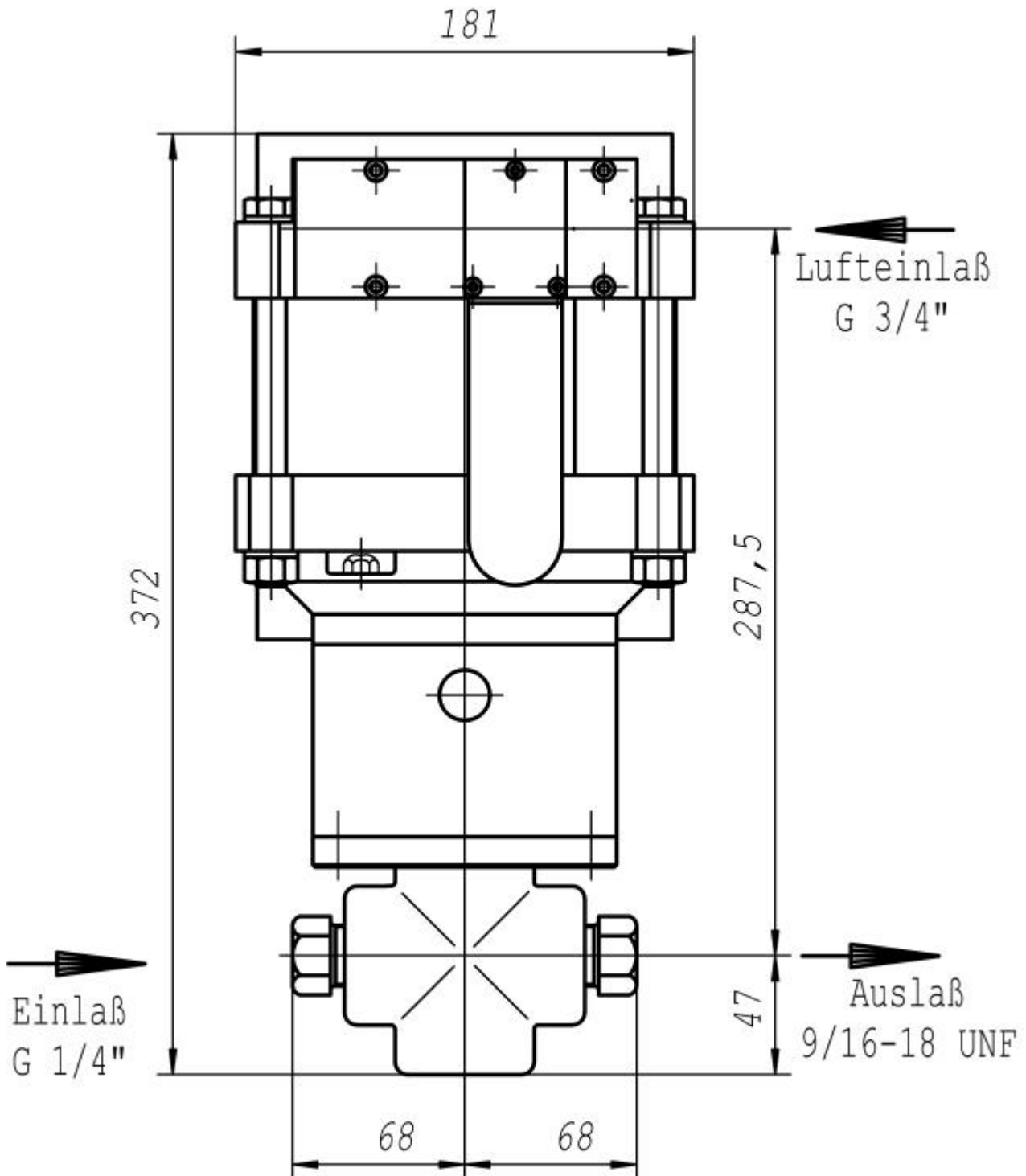
Dimension Drawing G500

Lufteinlaß = Air Drive Inlet

Einlaß = Liquid Inlet

Auslaß = Liquid Outlet

Standard pump comes with BSP and UNF ports as indicated and bottom inlet.



MAXIMATOR GmbH

37449 Zorge/Germany, Walkenrieder Str. 15, Tel.: ++49 (0) 5586 803 0, Fax: ++49 (0) 5586 803 40

e-mail: info@maximator.de, website: www.maximator.de

