

MAXIMATOR®

Technical Sheet Release: 11/2000	G400(L)	Oil service					
	G400(L)VE	Water service					
 <p style="text-align: center;">G400(L)S Single acting, single air drive head, side inlet (Standard = Bottom inlet, see dimension drawing)</p>	Technical Data:						
	Air Drive Pressure:	1–10 bar/14,5–145 psi					
	Maximum Permitted Outlet Pressure:	3,980 bar/ 58,000 psi					
	Pressure ratio:	1 : 398					
	Displacement Volume/Double Stroke:	2.5 cm ³ / 0.15 cu.inch					
	Connections:						
	Inlet:	Standard: Bottom inlet 3/4 BSP					
	Outlet:	9/16-18UNF					
	Air Drive:	¾ BSP					
	Maximum Operating Temperature:	60°C					
	Net weight:	13.5 kg					
	<i>Pressure and flow performances, please see enclosed graph.</i>						
	Wetted materials of construction:	Seal Package:	<table border="1"> <tr> <td>G400(L):</td> <td>Polyurethane, Buna N</td> </tr> <tr> <td>G400(L)VE</td> <td>UHMWPE, Viton</td> </tr> </table>	G400(L):	Polyurethane, Buna N	G400(L)VE	UHMWPE, Viton
	G400(L):	Polyurethane, Buna N					
G400(L)VE	UHMWPE, Viton						
	Pump Body:	1.4313					
	Piston:	1.4112 (hardened)					
	Fittings:	1.4122					
Approximate Dimensions:							
	Height:	300mm					
	Depth:	193.5 mm					
	Width:	272 mm					
Available Options:							
	Seal material for oil service (standard):	G400(L)					
	Seal material for water service:	G400(L)VE					
	Side inlet:	G400(L) S / G400(L)VE S					
	Special inlet ports, i.e. NPT	G400(L) with NPT inlet G400(L)VE with NPT inlet					
	Special seal material to handle special fluids on request.						
Available Accessories:							
Air control units for G series with filter pressure regulator, control pressure gauge and shut-off valve:	G400(L) with C2						
To protect the pump against excessive outlet pressures or to limit the outlet pressure, a safety valve can be fitted to the air control unit in the air drive line:	G400(L) with C2/SVair (The required outlet pressure has to be indicated.)						

Please consult factory for more information.

All technical and dimensional information subject to change. All General Terms and Conditions of sale, including limitations of our liability, apply to all products and services sold.

MAXIMATOR GmbH

37449 Zorge/Germany, Walkenrieder Str. 15, Tel.: ++49 (0) 5586 803 0, Fax: ++49 (0) 5586 803 40

e-mail: info@maximator.de, website: www.maximator.de

MAXIMATOR®

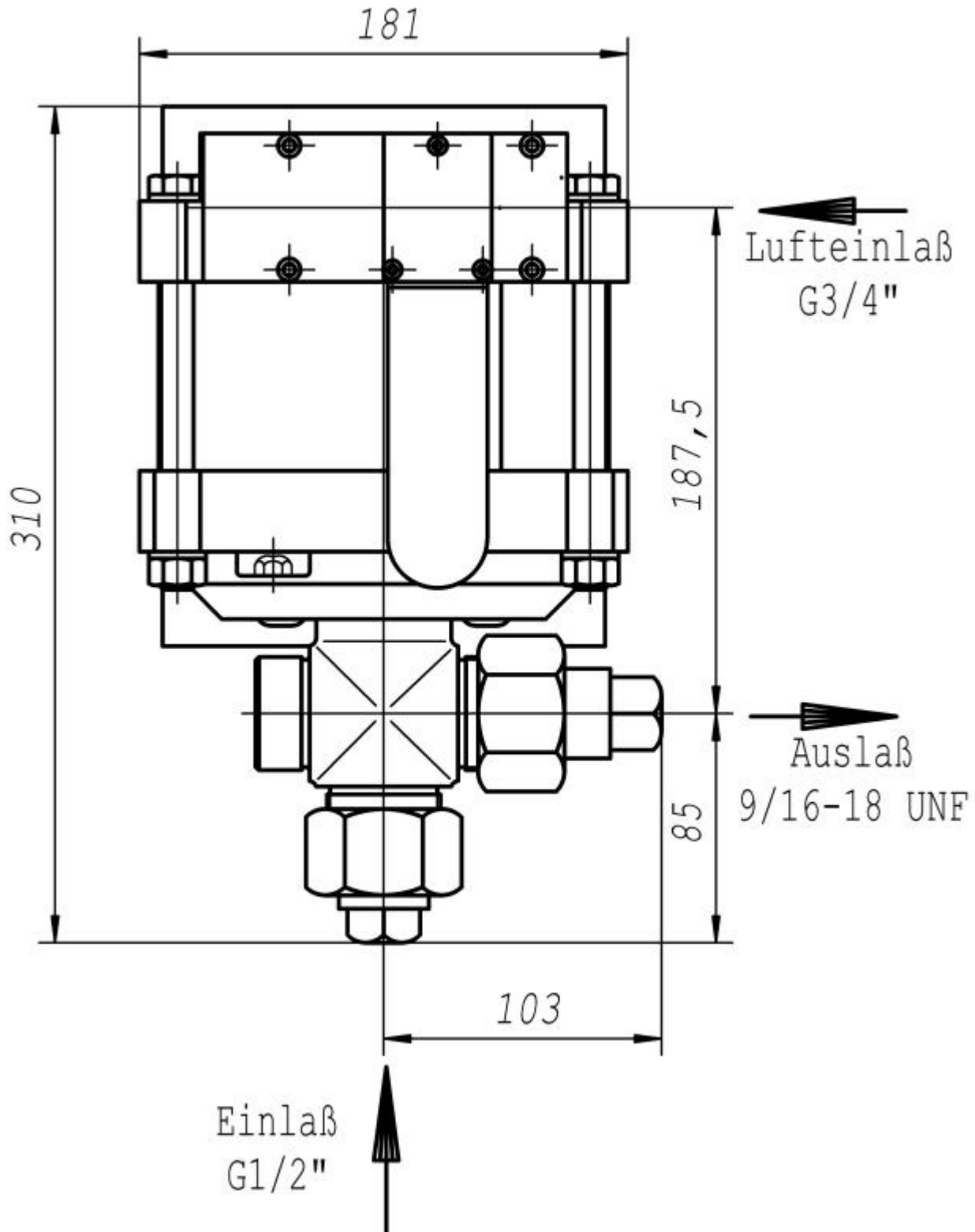
Dimension Drawing G400

Lufteinlaß = Air Drive Inlet

Einlaß = Liquid Inlet

Auslaß = Liquid Outlet

Standard pump comes with BSP and UNF ports as indicated and bottom inlet.



MAXIMATOR GmbH

37449 Zorge/Germany, Walkenrieder Str. 15, Tel.: ++49 (0) 5586 803 0, Fax: ++49 (0) 5586 803 40

e-mail: info@maximator.de, website: www.maximator.de

